

# DESTACKER DOUBLE BLANK DETECTOR SPRING MOUNTS

Vacuum Products | Features and Options | Ordering Information

## DBD Series

### Features:

- Orbital design allows compliance to blanks within +/- 15° without having to make any automation, tooling or robot adjustments. [US Patent #4,662,668]
- Elimination of compression springs results in long-lasting, reliable performance
- **HD** Version provides added stability for heavy-duty applications

### Specifications:

Operating Pressure: 4 bar [60psi]  
Electric: Sensor supplied by customer

#### CPI-DBD-(X)-SCMB-(T)

Ø1.25" Thru Hole  
Bulkhead Mount



#### CPI-DBD-(X)-SCM10/25-(T)

Ø1.00"/25mm  
Extension Mount



#### CPI-DBD-(X)-SCMB-(T)-HD

Ø1.00"/25mm Tube Mount  
Heavy-duty (Double Pogo)



**CPI** - **DBD** -   -   -   - **HD** — **Heavy-Duty** (SCMB (Double Pogo) only)

#### Base Model

**DBD**  
Double Blank  
Detector

#### Sensor Size

**42** Ø42mm  
**54** Ø54mm

(Sensors not  
Included)

#### Mounting Style

**SCM10** Ø1.00" Extension Mount  
**SCM25** Ø25mm Extension Mount  
**SCMB** Bulkhead Mount

#### Vertical Travel (T) (See pages 46-47)

**200E** 2.00 in. with NPT Vacuum Port (Except -HD)  
**400E** 4.00 in. with NPT Vacuum Port  
**600E** 6.00 in. with NPT Vacuum Port  
**800E** 8.00 in. with NPT Vacuum Port (-HD only)  
**050M** 50mm with G Vacuum Port (Except -HD)  
**100M** 100mm with G Vacuum Port  
**150M** 150mm with G Vacuum Port  
**200M** 200mm with G Vacuum Port (-HD only)

US/INTL Patents: 6,988,696 / 7,281,739 / 1,921,031

#### CPI-DBD-(X)-(T)-SCMC-(D)

Ø1.25"/40mm  
Tube Mount



#### X=Sensor Size

**42** Ø42mm  
**54** Ø54mm

(Sensors not Included)

#### T=Vertical Travel

**200E** 2.00 in. with NPT Vacuum Port  
**400E** 4.00 in. with NPT Vacuum Port  
**600E** 6.00 in. with NPT Vacuum Port  
**050M** 50mm with G Vacuum Port  
**100M** 100mm with G Vacuum Port  
**150M** 150mm with G Vacuum Port

#### D=Tube Mount

**40** 40mm Tube Mount (Metric Only)  
**150** 1.50" Tube Mount (Imperial Only)

(See page 50)

#### CPI-DBD-42-200E-SCMS

Ø45mm  
BodyBuilder Mount

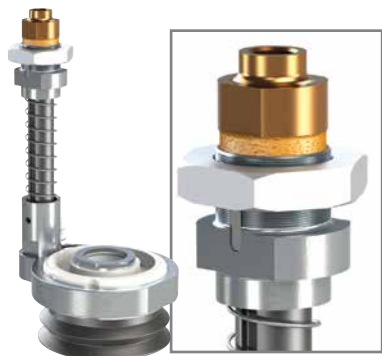
(See page 51)



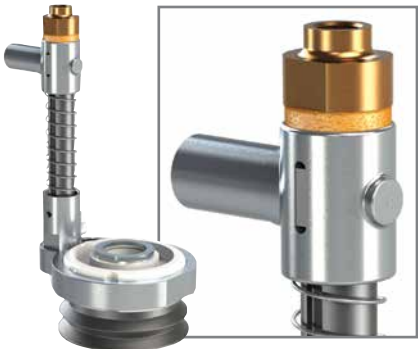
# DESTACKER DOUBLE BLANK DETECTOR SPRING MOUNTS

Vacuum Products | Dimensions | Technical Specifications

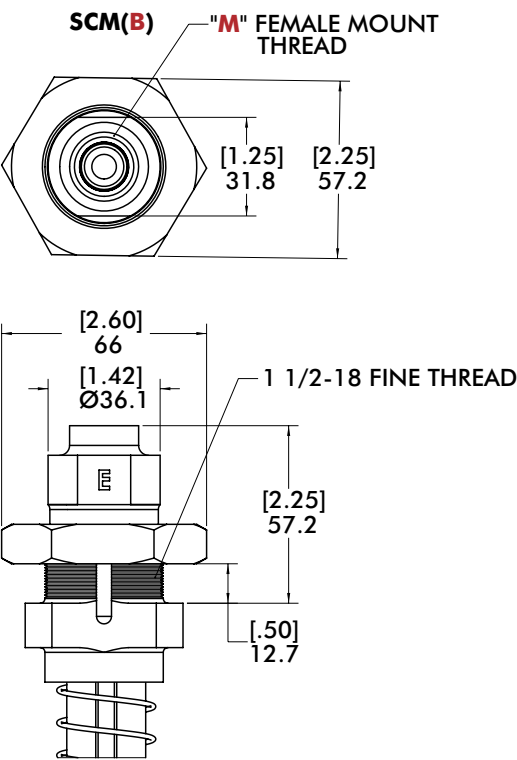
## DBD Bulkhead/Extension Style Dimensions



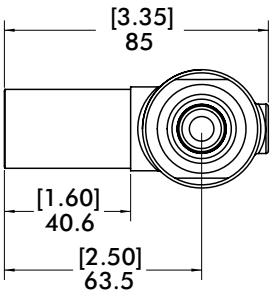
**SCMB**  
Ø1.25" Thru Hole  
Bulkhead Mount



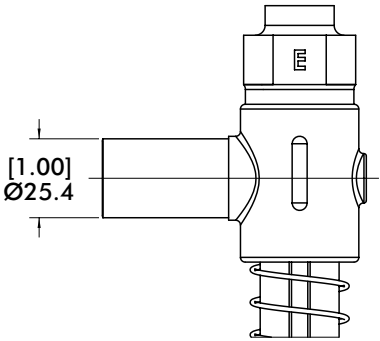
**SCM10/25**  
Ø1.00"/25mm  
Extension Mount



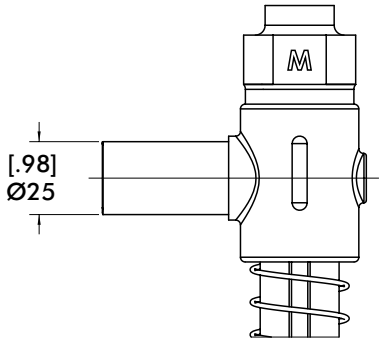
**SCM(10) & SCM(25)**



**SCM(10) (ENGLISH)**



**SCM(25) (METRIC)**

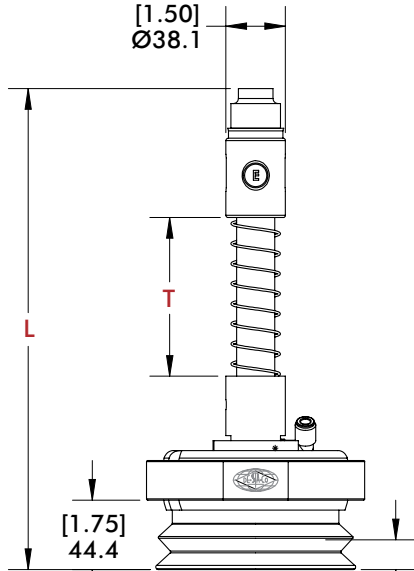
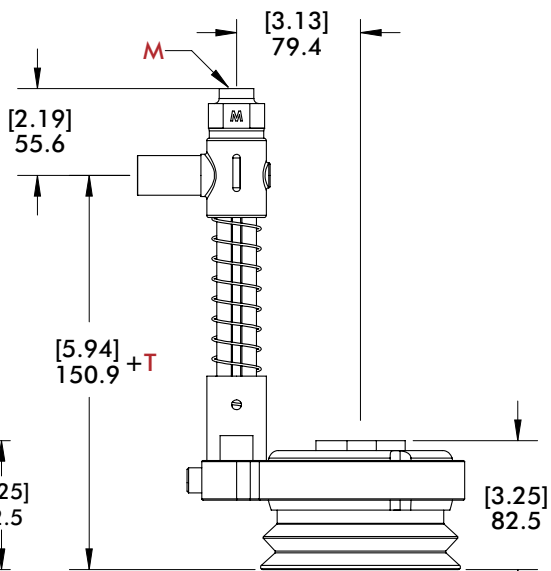
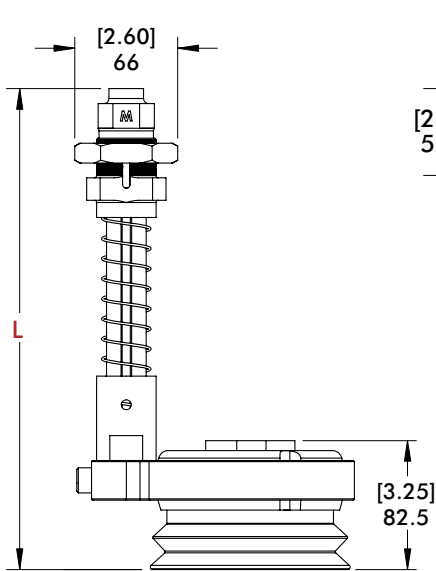
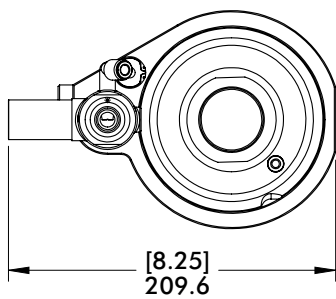
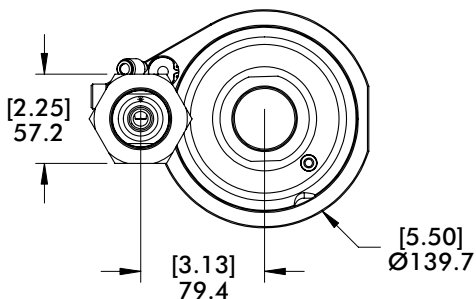
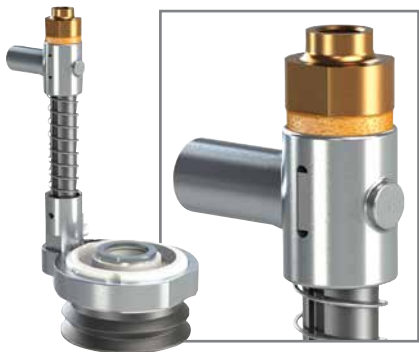


Version	(M)
Imperial	3/8" NPT
Metric	3/8" G



# DESTACKER DOUBLE BLANK DETECTOR SPRING MOUNTS

Vacuum Products | Dimensions | Technical Specifications

## DBD Bulkhead/Extension Style



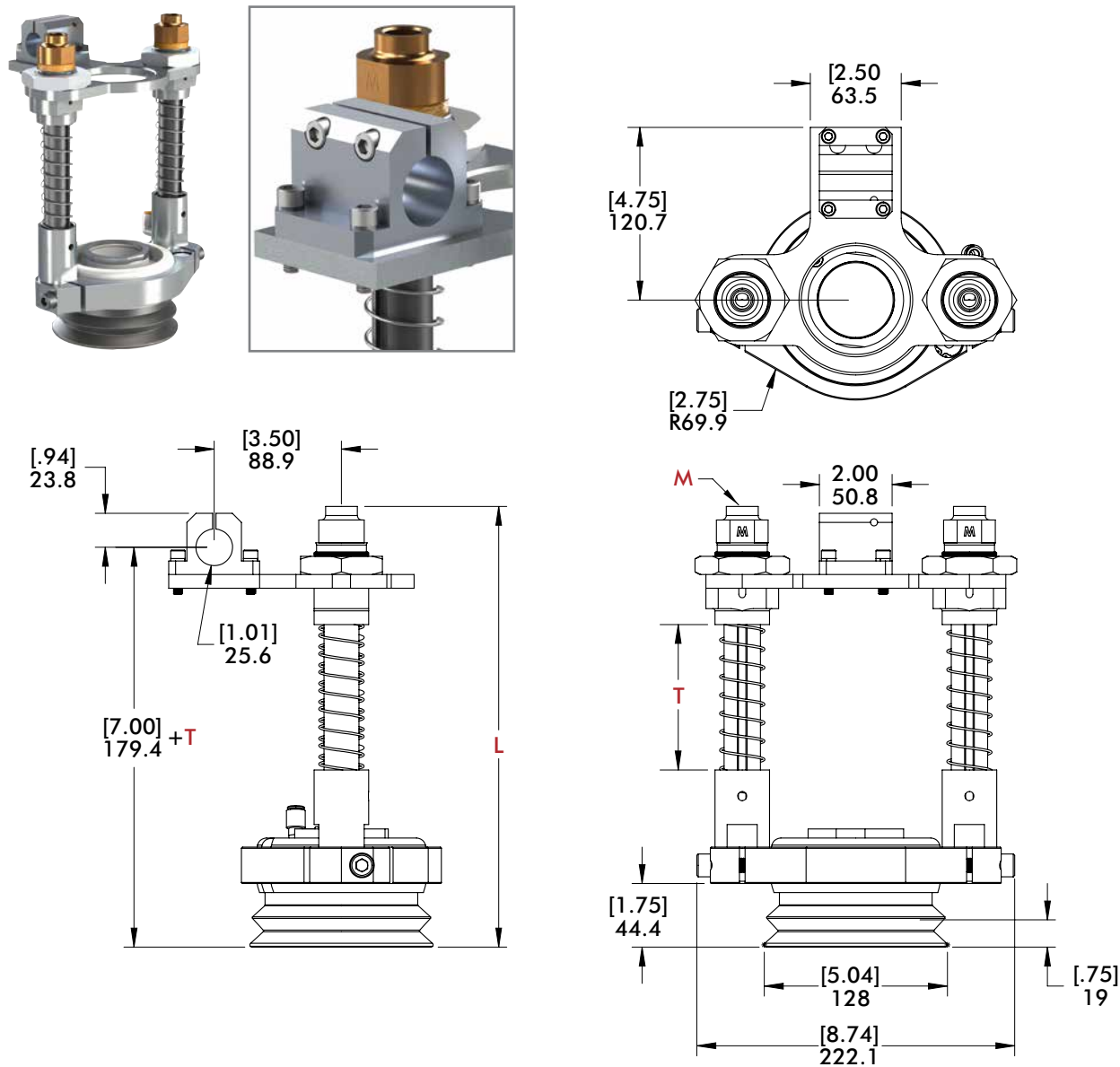
### DBD Travel and Length - CPI-DBD-(X)-SCM(X)-(T)

Version	Vertical Travel (T)	(L)	(M)	Weight
 Imperial	200E (2.00")	257.1 [10.12]	3/8" NPT	.85kg [1.87 lb]
	400E (4.00")	307.9 [12.12]		.90kg [1.97 lb]
	600E (6.00")	358.7 [14.12]		.94kg [2.08 lb]
 Metric	050M (50mm)	257.1 [10.12]	3/8" G	.85kg [1.87 lb]
	100M (100mm)	307.9 [12.12]		.90kg [1.97 lb]
	150M (150mm)	358.7 [14.12]		.94kg [2.08 lb]



# DESTACKER DOUBLE BLANK DETECTOR SPRING MOUNTS

Vacuum Products | Dimensions | Technical Specifications

## DBD Heavy Duty (Double Pogo)



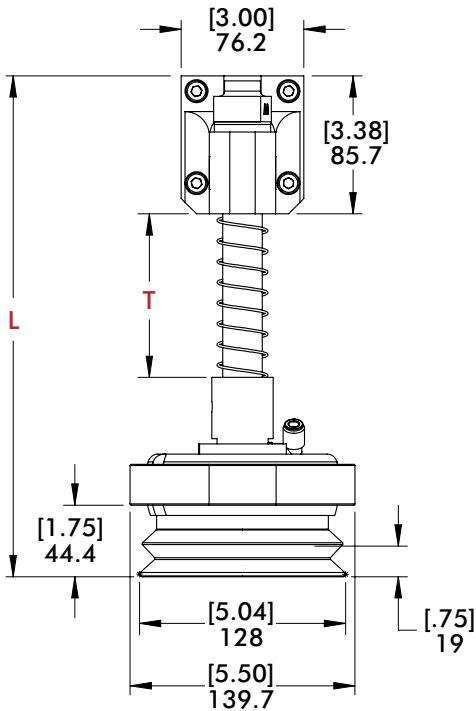
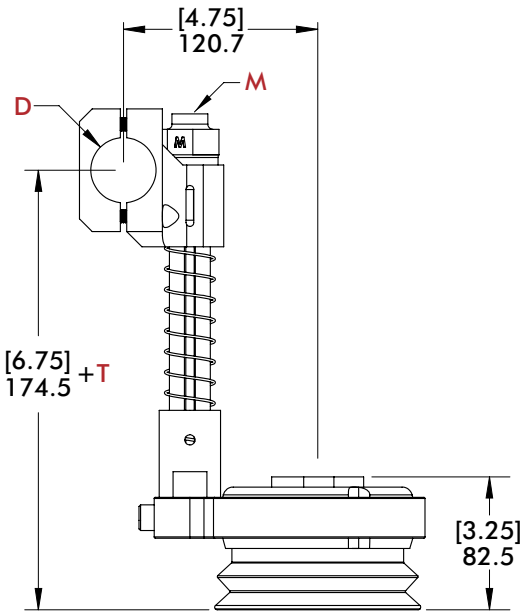
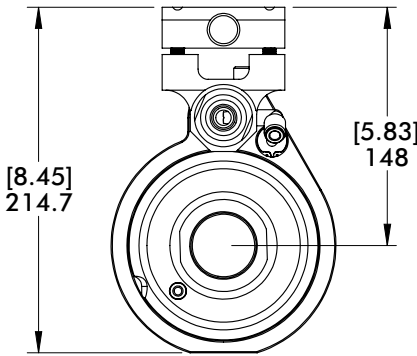
### DBD Travel and Length - CPI-DBD-(X)-SCMB-(T)-HD

Version	Vertical Travel (T)	(L)	(M)	Weight
 Imperial	400E (4.00")	307.9 [12.12]	3/8" NPT	3.06kg [6.75 lb]
	600E (6.00")	357.9 [14.09]		3.16kg [6.97 lb]
	800E (8.00")	405.9 [15.98]		3.23kg [7.12 lb]
 Metric	100M (100mm)	307.9 [12.12]	3/8" G	3.06kg [6.75 lb]
	150M (150mm)	357.9 [14.09]		3.16kg [6.97 lb]
	200M (200mm)	405.9 [15.98]		3.23kg [7.12 lb]

# BODYBUILDER™ DOUBLE BLANK DETECTOR SPRING MOUNTS

Vacuum Products | Dimensions | Technical Specifications

**DBD** Ø1.25"/40mm Tube Mount





**X**=Sensor Size

**42** Ø42mm

**54** Ø54mm

(Sensors not Included)

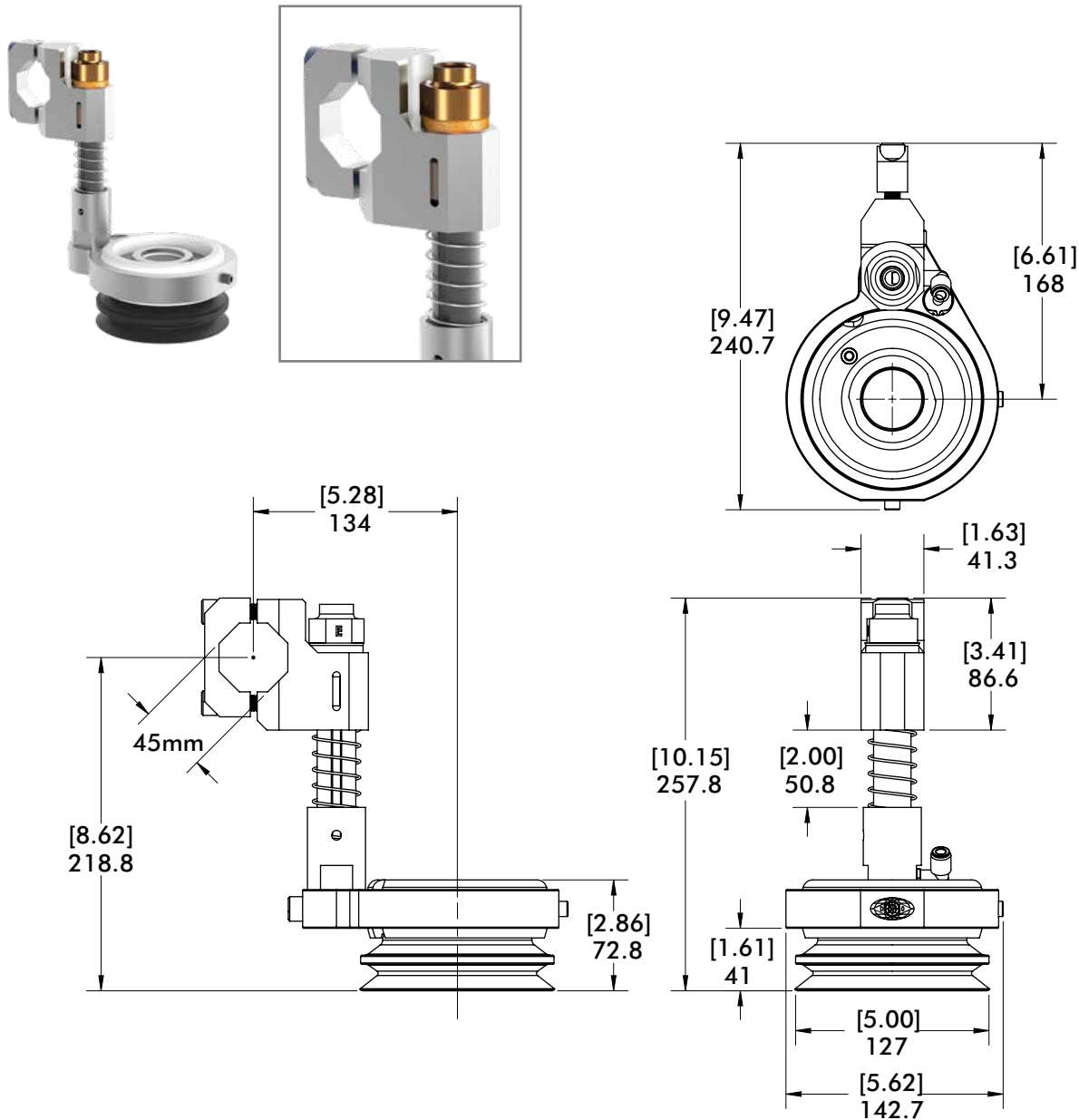
**DBD** Travel and Length - CPI-DBD-(**X**)-(T)-SCMC-(**D**)

Version	Vertical Travel (T)	(L)	(M)	(D)	Weight
 Imperial	200E (2.00")	261.1 [10.28]	3/8" NPT	150 (Ø1.50")	.85kg [1.87 lb]
	400E (4.00")	311.1 [12.25]			.90kg [1.97 lb]
	600E (6.00")	369.9 [14.21]			.94kg [2.08 lb]
 Metric	050M (50mm)	261.1 [10.28]	3/8" G	40M (Ø40mm)	.85kg [1.87 lb]
	100M (100mm)	311.1 [12.25]			.90kg [1.97 lb]
	150M (150mm)	369.9 [14.21]			.94kg [2.08 lb]


# DESTACKER DOUBLE BLANK DETECTOR SPRING MOUNTS

Vacuum Products | Dimensions | Technical Specifications

**DBD** Ø45mm BodyBuilder Mount



**CPI-DBD-42-200E-SCMS-45B**

Version	Thread	Weight
Imperial		
	3/8" NPT	1.8kg [3.9 lb]

[illegible]